

IQ Enhanced Package

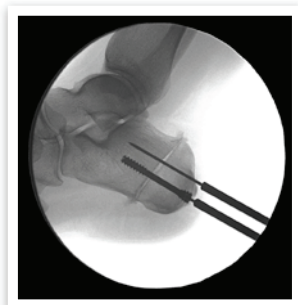
for the Fluoroscanner InSight mini C-arm

FLUOROSCAN®
InSight

The new Fluoroscanner® InSight with IQ Enhanced software delivers superb image quality faster, while still delivering versatility and maneuverability in one efficient and cost effective system.

Designed specifically for the orthopedic and extremity imaging market, Fluoroscanner InSight delivers ultra-fine, low-dose fluoroscopy and snap-shot images.

The systems' fully automated and customizable acquisition makes it a simply "point-and-shoot" device perfect for today's busy surgeon.



Product Specifications

X-ray Source:

Grounded Anode X-ray Tube
Maximum Output: 0.1 mA @75 kVp
Focal Spot Size: 0.045 mm
Rated Peak Tube Potential: 75 kVp
Tube kVp Range: 40 to 75 kVp
Tube Current Range: 0.020 to 0.100 mA

Image Intensifier:

Dual Mode 4" (10cm) and 6" (15cm)

Monitor:

20" LCD Flat Panel
Touch Screen Sensitivity
Extendable with 350° Swivel
Digital DICOM Compliant
Resolution: 1200 x 1600
HD Quality Display

Image Matrix Size:

1k x 1k
16 bit Image Processing

Power Failure Data Protection:

Software Protected

X-ray Power Control:

Auto IQ Mode
Auto Mode
Manual Mode

Laser Alignment Light

On-off or 60 sec Timed
IEC Class 1

C-arm:

Free Space: 14" (36 cm)
Depth: 16" (40.6 cm)
Orbital Rotation: 120°
Horizontal Travel: 23°
Vertical Travel: 23" (58 cm)
Pivot Rotation: 380°
Panning Motion: 320°

Image Storage:

Permanent Hard Drive:
8,000 Images
20 Cine Minutes (max duration for one
Cine recording is 15 seconds)
Removable Data Storage:
USB Port
CD/DVD-RAM Drive

Host Operating System:

Microsoft® Windows XP

Image Acquisition:

30 frames/sec (standard)
Rate of 25 frames/sec for Cine Recording

Max Images Per Session:

200 Images

Imaging Modes:

Snapshot - Single Shot
Continuous - Fluoro
Cine (Digital) Recorded Fluoro

Frame Averaging

Ultra/Auto
High/Med/ Low/ Off
Configurable

Radiation Report:

DAP Report
Paper Print and DICOM send

Imaging Features:

Automated Image Processing
Auto Real-Time Noise Reduction
Auto Edge Enhancement
Auto-Dose Control
Magnify-Zoom-Pan
Brightness/Contrast Control
Physician Preference Configurable

Footswitch Options:

Wired Triple Function Footswitch
Wireless Triple Function Infrared Footswitch
Configurable Save/Tag

Printer Option:

Small Format Thermal Printer
Large B/W Hybrid Graphic Printer
Multi-format Prints

DICOM Option:

Modality Worklist
Print
Store
Storage Commitment

Dimensions:

H: 66" (168 cm)
W: 28" (71 cm)
D: 32" (81 cm)
495 lbs (225 kg)

Space Allocation:

5' x 6.6' (1.5 m x 2 m)
Door size: 30" minimum

Temperature Range:

Storage: -4 to +122 F (-20 to +50 C)
Operating: 60 to +90 F (+15 to +32 C)

Power Requirements:

100, 120, 220, 240 VAC selectable
50/60 Hz input; 75 VA