



Certified Refurbished



Drager Narkomed 2B  
Refurbishing Process



Certified Refurbished

## Drager Narkomed 2B Refurbishing Process

DRE takes great pride in the quality of our refurbished machines. We'd like to share with you some of the refurbishing process that a Drager Narkomed 2B undergoes in our facility.

### Step 1

The machine is received.



### Step 2

The machine is dismantled and sent to the Paint Department before work begins in the Biomedical Lab.



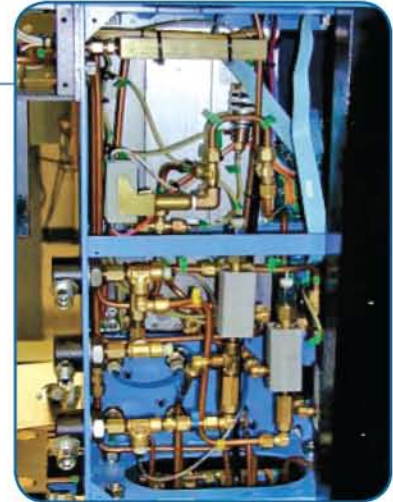


Certified Refurbished

## Drager Narkomed 2B Refurbishing Process

### Step 3

The top image shows the rear-view of the flowmeter bank prior to Tygon tube replacement.



In the middle image, the yellow arrows point to some Tygon tubing that has become discolored and brittle with age and usage. Red arrows point to the new tubing that a DRE biomed has replaced.



You can see that our biomed has almost completed the tubing replacement.

Typically, there is more than 26 feet of this tubing in each Drager 2B anesthesia machine.

DRE replaces all of the tubing in every fully refurbished anesthesia machine.





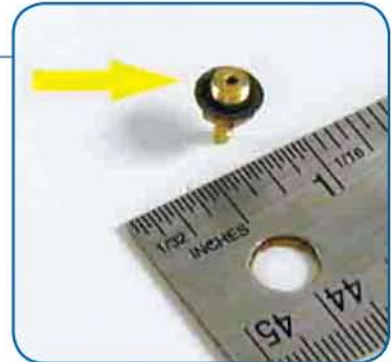
#### Step 4

The tiniest details are not overlooked. These are barbed fittings with gaskets that can dry rot and become brittle, causing leaks.

The yellow arrow (top picture) points to a gasket that has been flattened and cracked by time and usage.

The red arrow (lower picture) points to a new replaced gasket. 14 of these fittings and gaskets can be found on a Narkomed 2B.

DRE replaces each gasket on a fully refurbished machine.



#### Step 5

Miscellaneous items can become loose or broken. Here a knob is repaired and replaced.





Certified Refurbished

## Drager Narkomed 2B Refurbishing Process

### Step 6

Here we show the “burned in” image on the monitor screens.



New monitor screens are installed whenever needed in a fully refurbished anesthesia machine from DRE.



### Step 7

Castors are often in bad shape when an anesthesia machine comes to DRE, as shown here.

On a fully refurbished unit from DRE, all castors are either replaced or painted.





Certified Refurbished

### Step 8

Every part of the machine is tested and calibrated to meet or exceed the original manufacturer's specifications.

Other replaced items:

- Hoses
- Worn labels and indicators
- Owner's manual
- Rubber goods

Other refurbished items:

- Absorber

